

**Stainless Steel Shear Beam Load Cell**



**FEATURES**

- Capacities 300-5000 kg, 1000-5000 lbs
- Stainless steel construction
- OIML R60 and NTEP approved
- Hermetically sealed to IP68
- Specially designed for harsh environment

**OPTIONAL FEATURES**

- EEx ia IIC T6 hazardous area approval
- FM approval available

**DESCRIPTION**

Model 3510 provides the weighing industry with the ultimate protection necessary for today's hostile environments in an economical low profile range suitable for platform scale manufacture.

Its low profile and all welded sealing combined with high accuracy makes this load cell ideally suited for low profile platforms, pallet truck weighers, tanks and silos. The guide slots incorporated into the upper and lower mounting faces enable manufacturers to easily position the load cell.

Hermetically sealed against moisture, the construction of the model 3510 in combination with a polyurethane dual shielded cable, enables continuous operation in harsh environments while maintaining a high operating specification.

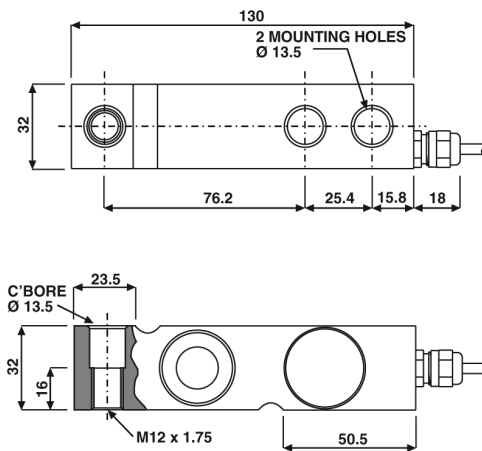
The two additional sense wires feed back the voltage reaching the load cell. Complete compensation of changes in lead resistance due to temperature change and/or cable extension, is achieved by feeding this voltage into the appropriate electronics.

**APPLICATIONS**

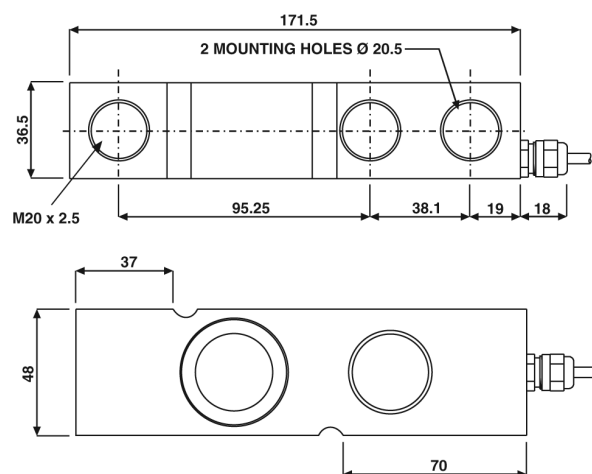
- Low profile platforms
- Pallet truck weighing
- Tank and silo weighing
- Harsh environment weighing
- Food industry weighing

**OUTLINE DIMENSIONS** in millimeters

**DIMENSIONS FOR CAPACITIES 300, 500, 1000 & 2000kg**



**DIMENSIONS FOR CAPACITY 5000kg ONLY**



Standard end loading shown.

Options include:

'Through-hole' - plain or threaded.

'T-End' - supplied current and voltage matched for platforms.

